

PUERTA DE EMERGENCIA CON RESISTENCIA AL FUEGO DE 2-3 HORAS SEGUN NORMA

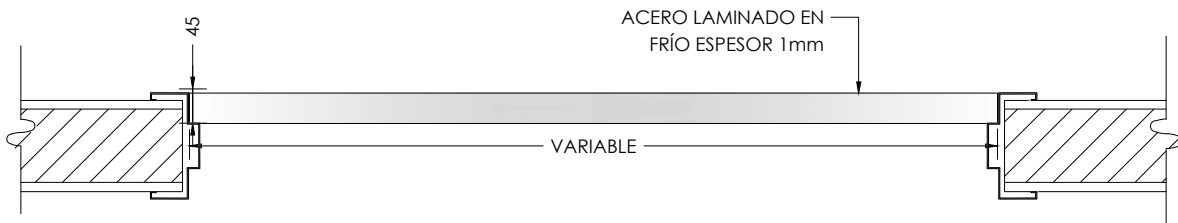
CERTIFICADAS



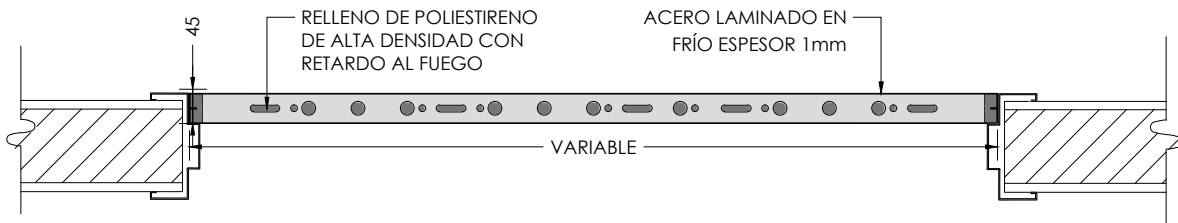
DETALLE PUERTA DE EMERGENCIA

MULTIDISCIPLINAS
 TELEFONO: (506) 2222-0908
 E-MAIL: mcercone@multi.cr

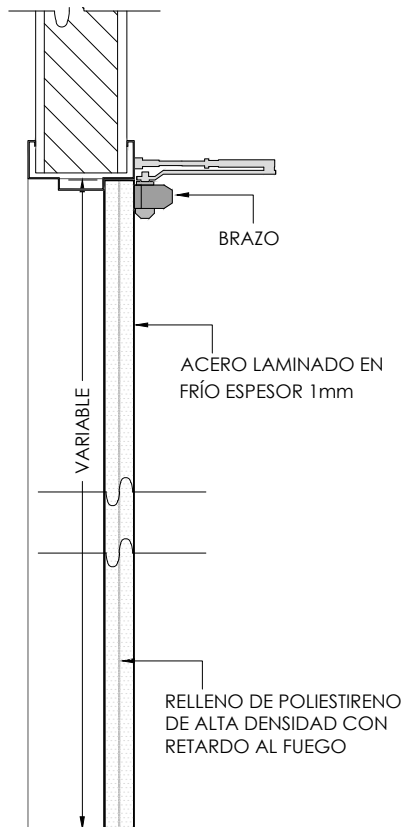




CARA SUPERIOR



CARA INFERIOR



CORTE A-A

CERTIFICADAS

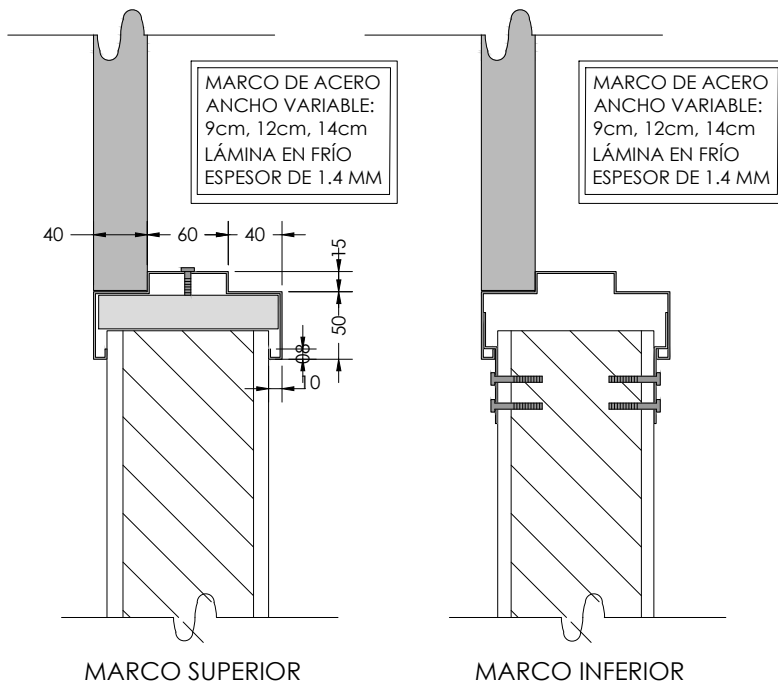


DETALLE PUERTA DE EMERGENCIA

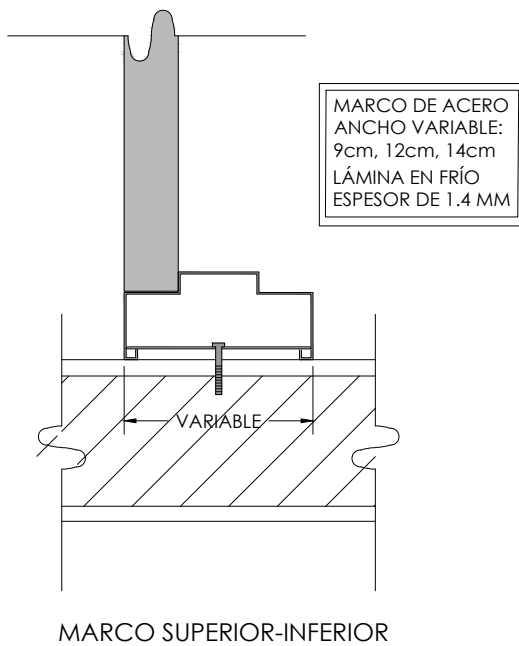
MULTIDISCIPLINAS
 TELEFONO: (506) 2222-0908
 E-MAIL: mcercone@multi.cr



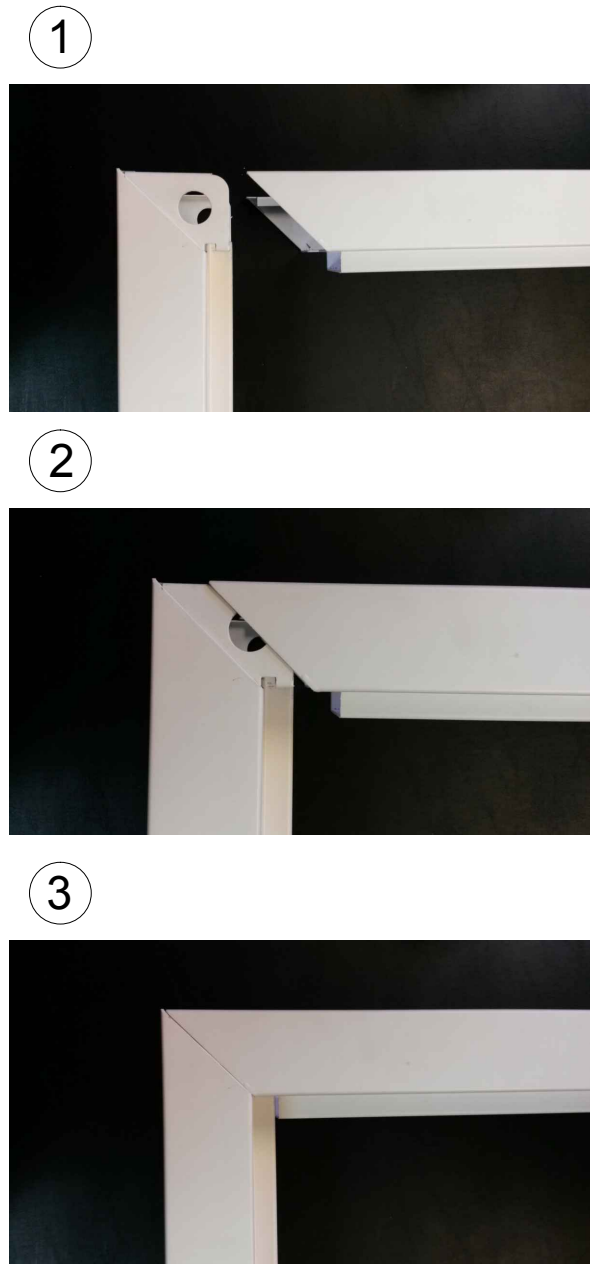
UNIÓN DE MARCOS



ANCLAJE EN BUQUE TIPO 1



ANCLAJE DE BUQUE DE TIPO 2



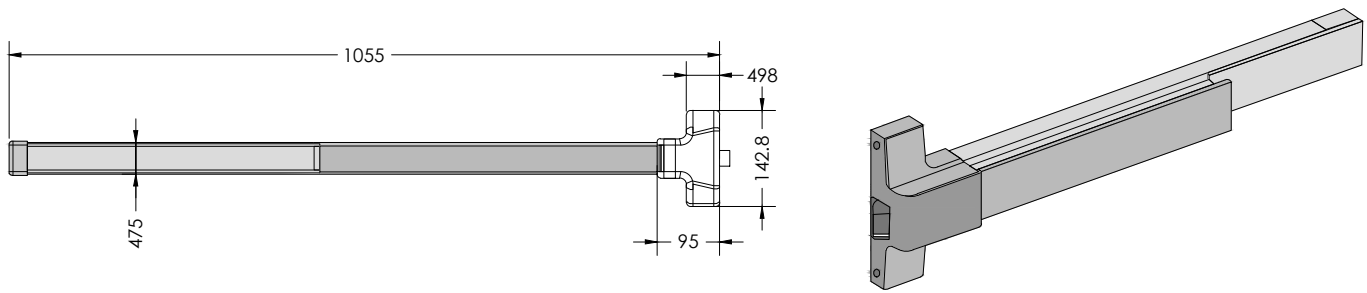
CERTIFICADAS



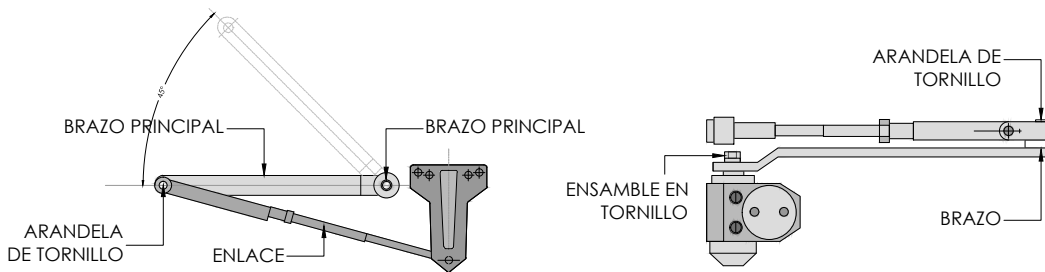
DETALLE PUERTA DE EMERGENCIA

MULTIDISCIPLINAS
 TELEFONO: (506) 2222-0908
 E-MAIL: mcercone@multi.cr

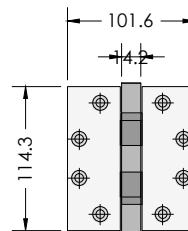
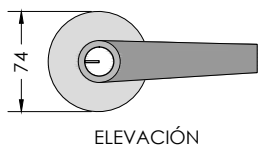
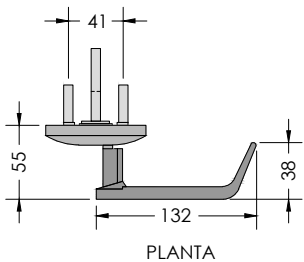




- A. COMPLIANCE: UL305, ANSI/BHMA A156.3 GRADE 1, CYCLE TEST 500 000 TIMES
- B. COMPLIANCE: EN 1125, CYCLE TEST 200 000 TIMES
- C. GB 12955-2008 FIRE-RATED
- D. LATCH IS STAINLESS STEEL 304
- E. COVER IS STAINLESS STEEL 304 OR STEEL
- F. CASE IS 1.2 MM THICKNEES
- G. SALT SPRAY TEST, 240 HOURS
- H. USE FOR 520-1000 MM WIDTH DOOR
- I. MODULARIZED DESING, SINGLE LOCK POINT IS EASY TO CHANGE INTO 3 AND 4 LOCK POINTS
- J. THREE OR FOUR POINT LOCKS FOR SUBWAY, BUS STATION, AIRPORT AND CONTAINER ETC



BRAZO PARA PUERTA



MANIJA
 ACERO INOXIDABLE 304
 ESPESOR DE PUERTA: 45-50mm
 CERTIFICADO: EN 1634 CON
 RESISTENCIA AL FUEGO

BISAGRA
 ESPESOR DE PUERTA 45-50 mm
 TAMAÑO DE BISAGRA 4"4
 SOPORTA UN PESO DE 55-80 KG
 SE NECESITAN 3 BISAGRA POR PUERTA

CERTIFICADAS



DETALLE PUERTA DE EMERGENCIA

MULTIDISCIPLINAS
 TELEFONO: (506) 2222-0908
 E-MAIL: mcercone@multi.cr

